

TrainCAM Monitor



VDS Rail
The onboard networking
company

12.1" Rolling-Stock Intelligent HMI



The TrainCAM Monitor is specifically designed to meet Ethernet cameras CAB viewing requirements during shunting operations.

Compared with similar products, due to his architecture and application software it is able to display multiple IP cameras streams with a very low latency, with a total video decoding capability over 100 Megapixels-per-second.

Equipped with a resistive touch screen, TrainCAM Monitor can display up to four (4) cameras simultaneously. Selected camera can be switched with no delay in a full screen mode.

The TrainCAM Monitor comes with a wide range of operating voltages and a top-level mechanical enclosure to meet EN 50155 and onboard requirements. It is ready for harsh environments and compliant with EN 50155.

Highlights

- Rolling-Stock applications
- EN 50155 compliant
- Operational Temperature: $-25^{\circ}\text{C} \div +70^{\circ}\text{C}$ according to EN 50155 class OT3
- Wide operating voltage range
- Resistive touchscreen
- XGA color TFT LCD panel
- One (1) 10/100BASE-T(X) Ethernet port.
- One (1) USB 2.0 port
- Rated IP65 on front panel

Technical specifications

PHYSICAL DATA

Power supply voltage (insulated)	Nominal 24/72/96/110 Vdc Range according to EN 50155 3W3C - D-Sub connector
Ethernet port	10/100BASE-T(X) - M12, female, 4-ways, D-coding connector
Service port	USB 2.0 - Type-A connector
Interruption voltage supply class	S2, according to EN 50155
Power consumption	30 W max
Overall dimensions	349 x 245 x 61 mm
Weight (max)	4 kg
Operating temperature	$-25^{\circ}\text{C} \div +70^{\circ}\text{C}$ ($+85^{\circ}\text{C}$ for 10 min. according to EN 50155 class OT3 with extended operating temperature ST1)
Relative humidity (non-condensing)	0 % \div 95 %
Storage temperature	$-40^{\circ}\text{C} \div +85^{\circ}\text{C}$
Degree of protection	IP65 on front panel

DISPLAY PHYSICAL DATA

Type	Color TFT LCD
Size	12.1"
Resolution	1024 x 768 pixels (XGA)
Colors	262K / 16.2M
Contrast	1000:1 (typ)
Brightness	600 cd/m ² (typ)
Touch Screen	Resistive

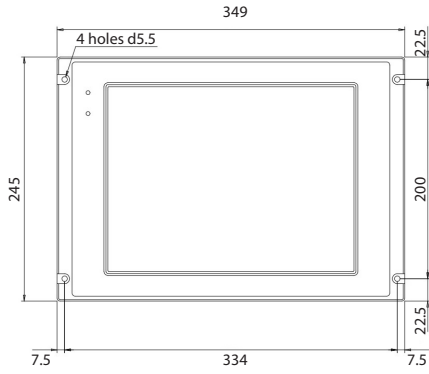
APPROVALS / COMPLIANCE

EN 50155	Railway Applications (Electronic equipment used on rolling stock)
EN 50121-3-2	Electromagnetic compatibility rolling stock apparatus
IEC 60068-2-1	Environmental testing: Tests - Test Ad: Cold
IEC 60068-2-2	Environmental testing: Tests - Test Bd: Dry heat
EN 60068-2-30	Environmental testing: Tests - Test Db variant 2 - Damp heat
EN 61373	Shock & Vibration - Category 1 class B
EN 50124-1	Insulation coordination
EN 45545-2	Fire & Smoke

TrainCAM Monitor

12.1" Rolling-Stock Intelligent HMI

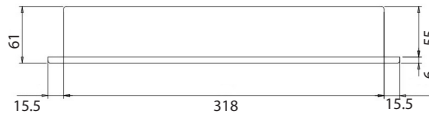
Train Control Desk Mounting



FRONT VIEW



SIDE VIEW



TOP VIEW